

# Particulate Filter Installation Instructions

PN 161442

The particulate filter removes water and debris from the compressed air system on the MAS-M animal scale.

## Tools Needed

- 9/16" wrench
- 12" adjustable wrench

## Kit Contents Include:

- Particulate filter
- Thread seal tape
- Super glue adhesive
- Black tubing
- Brass fitting male, elbow 1/4 NPT
- Brass fitting elbow 90° extruded street 1/4 NPT

The following instructions describe in step-by-step detail how to install the particulate filter:

1. Open the relief valve on the outside of the battery box.



6. Disconnect the positive lead (red) using the same 9/16" wrench.
7. Unhook the blue strap that holds the battery in place.
8. Cover the positive side of the battery with the red rubber cap to protect the operator from accidental sparking while removing the battery.
9. Pull battery out of battery box and set aside.

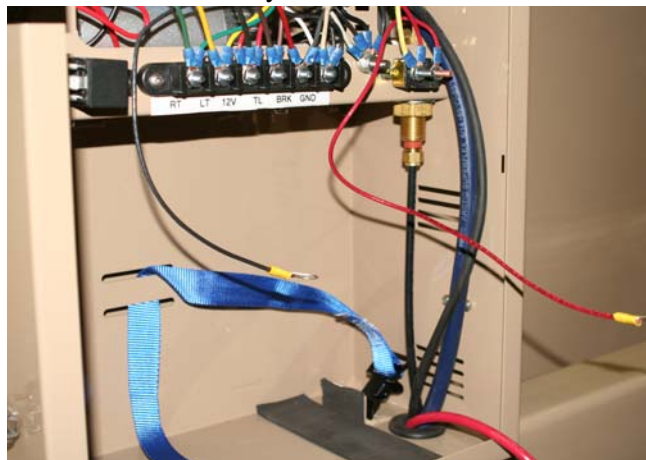
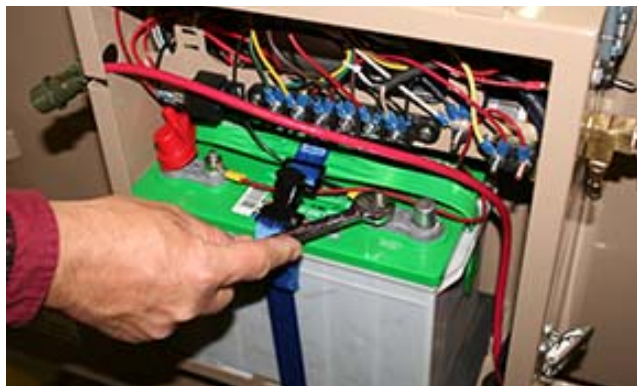
2. Open the two latches on the outside of the battery box.
3. Remove front cover and set aside.

## Dismantle Existing Air Line

10. Remove air line by pushing up on the fitting and pulling down on the air line simultaneously.

## Battery Removal

4. Remove battery connection covers.
5. Disconnect the negative lead (black) using a 9/16" wrench.

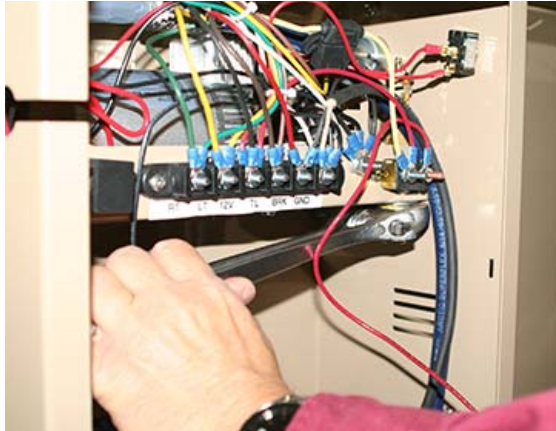


**CAUTION** While removing battery, be careful not to allow loose leads to touch as it may cause accidental sparking.

11. Remove the valve fitting by using a 9/16" wrench.



12. Loosen but do not remove the top valve fitting by using an adjustable wrench.



#### Prepare Filter and Fittings

13. Prepare fittings with thread seal tape on all threads using approximately 2 - 2.5 wraps on each threaded fitting.



14. Unscrew the filter (three pieces)



#### Attach Filter Assembly

15. Screw the L shaped male fitting onto the air line fitting.



16. Attach the top cover of the filter with the arrow facing out towards the front of the battery box (shown above).

17. Screw the extruded street brass fitting onto the front portion of the filter top (arrow side).



18. Screw white filter into bottom of the filter cover.

19. Screw clear filter outside cover onto entire assembly.



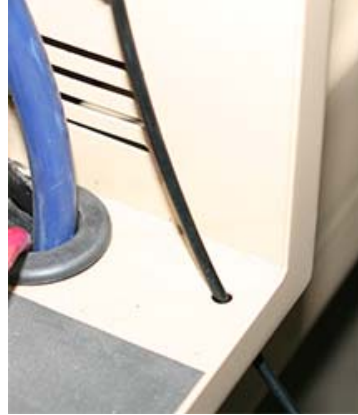
20. Place a small bead of super glue around the outside of only one end of the black tubing that came in the kit.



21. Push the glued side up into the bottom of the filter.



22. Guide the bottom portion of the tubing through the exit hole in the bottom of the battery box.



23. Tighten the outer brass fitting using 9/16" adjustable wrench.



24. Reattach the air line.



25. Snug up fitting and position the filter as close to the outside wall of battery box as possible.

26. Put battery back inside compartment.

27. Cinch the battery into the box using the blue strap.

28. Hook up the positive lead (red).

29. Hook up the negative lead (black).

30. Put the outside lid on the battery box and latch.

31. Close air relief valve on outside of box.